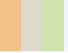



View
BY SYDNEY

Venue Capacity

SEATING AREAS & OPTIONS (PAX)	BANQUET (Square)	BANQUET (Long)	THEATRE BOARDROOM	COCKTAIL	CLASSROOM
 MAIN ROOM + VIEW ROOM + BAY SIDE ROOM	180	200	190	350-400	120
 VIEW ROOM	12	24	30	N/A	18

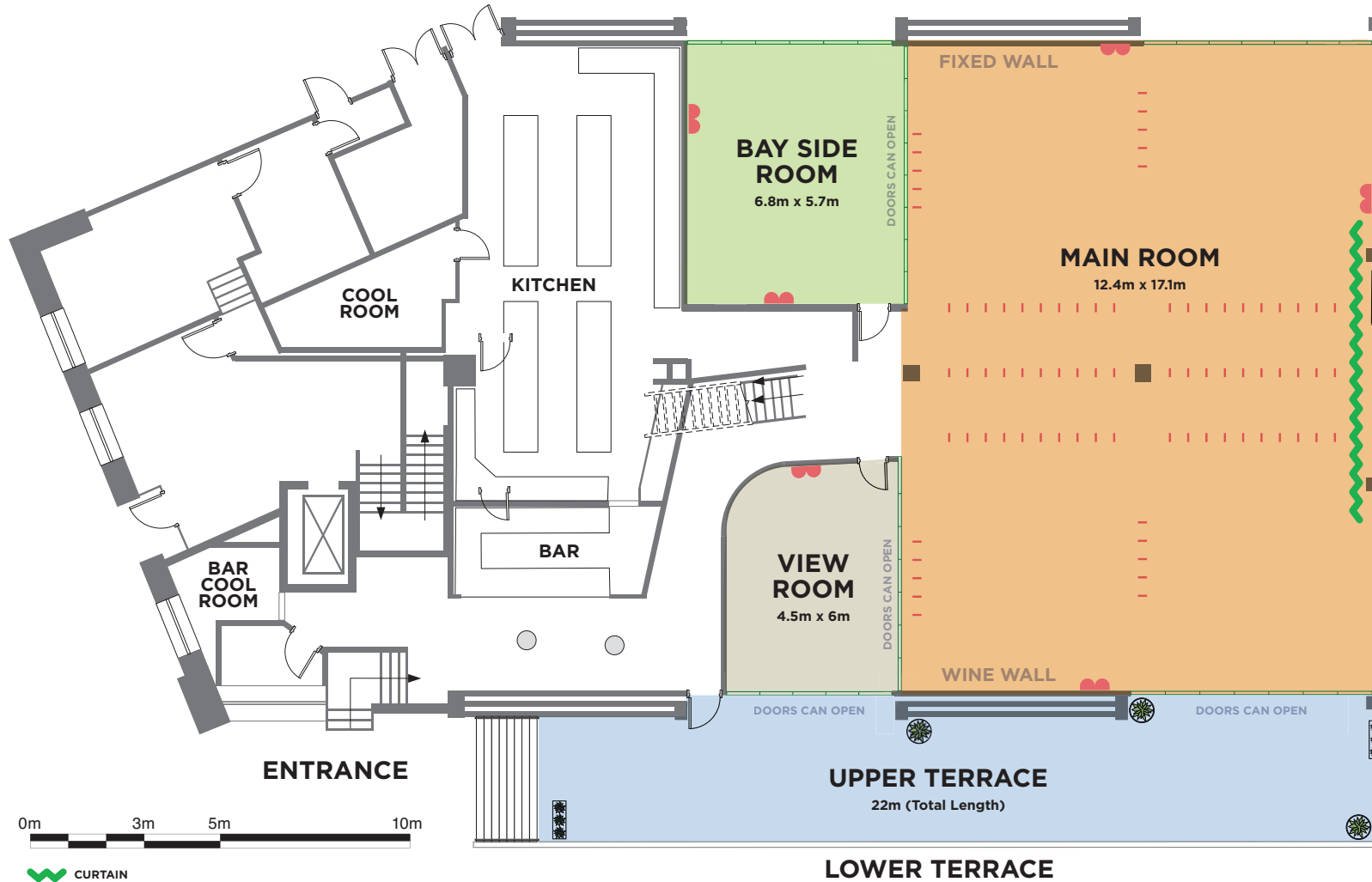
PLEASE NOTE: Capacities are calculated without Dance Floor. See floor plan overleaf.

Services & Facilities

- ✓ Water view of Sydney Harbour Bridge & Luna Park
- ✓ Natural light throughout
- ✓ Internal bar in venue
- ✓ Fully air-conditioned
- ✓ Large outdoor terrace with modern furnishing
- ✓ On site commercial kitchen facilities
- ✓ On site food & beverage operation team and event coordinators
- ✓ Professional, dedicated and experienced team
- ✓ Direct bump in access to the venue
- ✓ Built-in state of the art AV equipment (projectors, screens, 86" Digital touch screen displays, wireless microphones)
- ✓ Abundant on street parking
- ✓ Direct wharf access for drop off/pickup via water taxi
- ✓ External catering packages available

Wedding Packages

INCLUSIONS	SILVER	GOLD	PLATINUM	DIAMOND
Complimentary room hire	●	●	●	●
3 course alternate service menu	●	●	●	●
Canapes on arrival	-	-	● (3 pieces)	● (4 pieces)
BEVERAGE PACKAGE (BEER, WINE & SOFT DRINKS)	● Silver Selection	● Gold Selection	● Platinum Selection	● Diamond Selection + 30 minutes Complimentary Extension
Espresso coffee & assorted teas	-	●	●	●
Full white linens for guest & bridal table	●	●	●	●
Placement of your place cards & bonbonnières	●	●	●	●
Wireless microphone & lectern	●	●	●	●
Cake table & knife	●	●	●	●
3 hours face to face event coordination	●	●	●	●
3 printed menus per table	-	●	●	●
Table centerpiece per table (excludes flowers)	-	●	●	●
5m x 5m dance floor	-	-	●	●
Projector & screen	-	●	●	●
Easel & frame for your seating plan	-	●	●	●
Wedding cake cut & served as petits fours	-	-	●	●
Bridal suite to refresh	-	●	●	●



-  **CURTAIN**
8m (Length) x 6m (Height)
-  **RIGGING**
Weight restriction apply
-  **POWERPOINT**